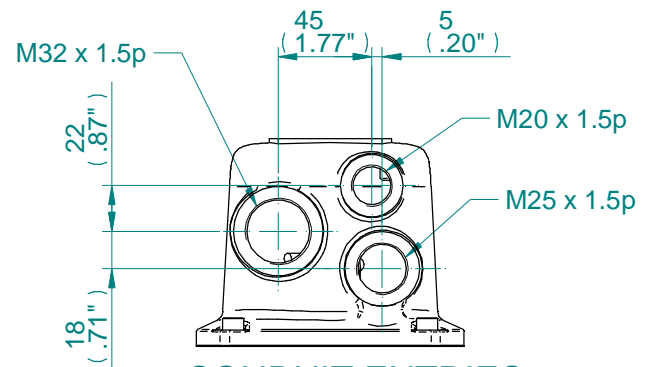
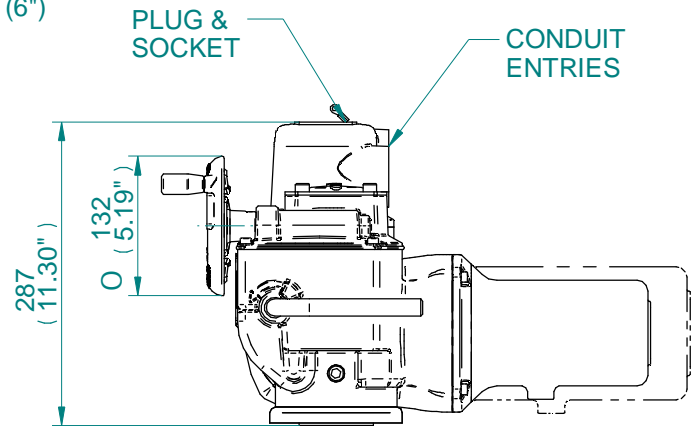
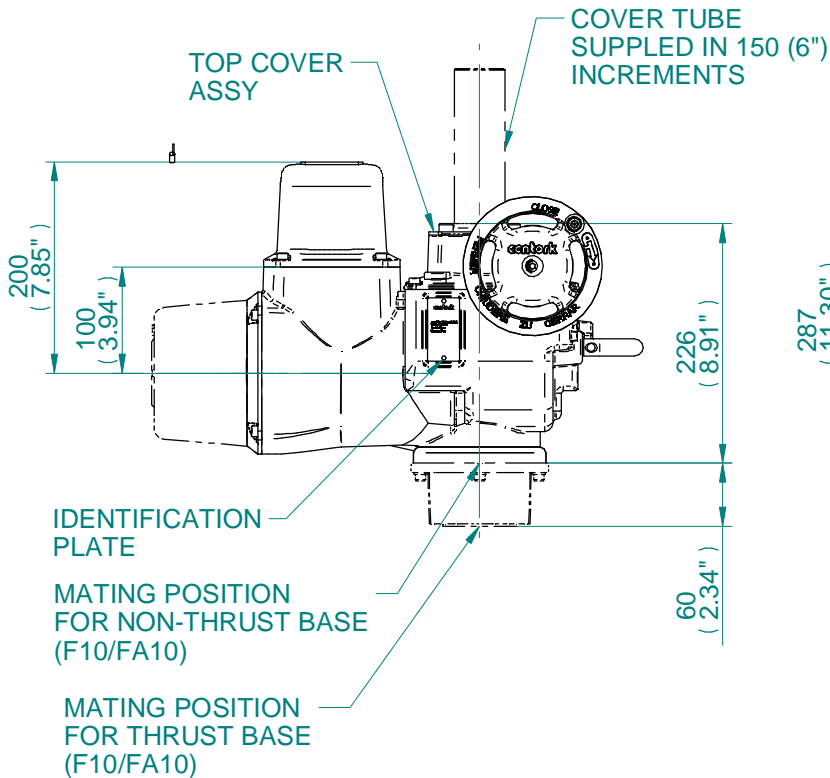
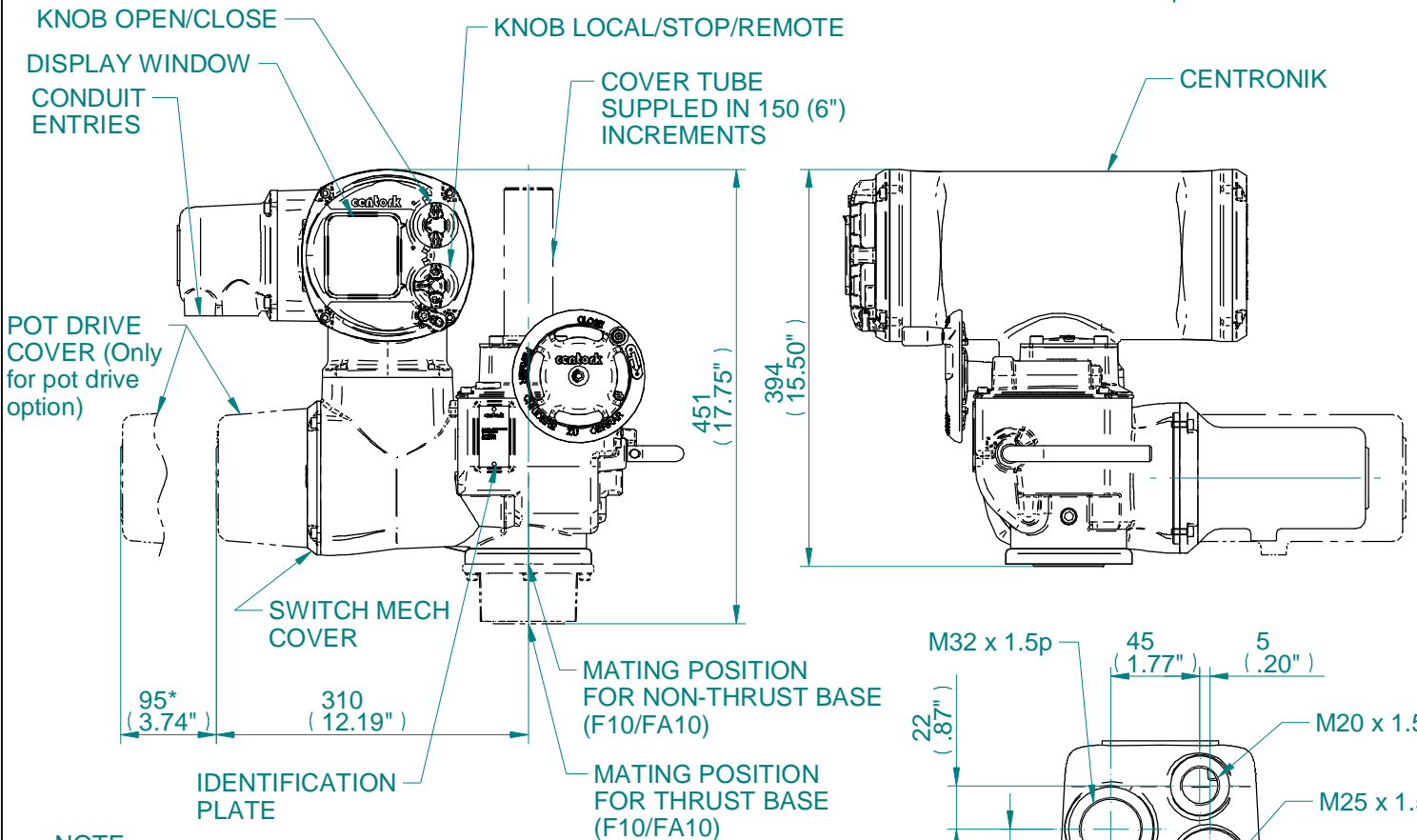
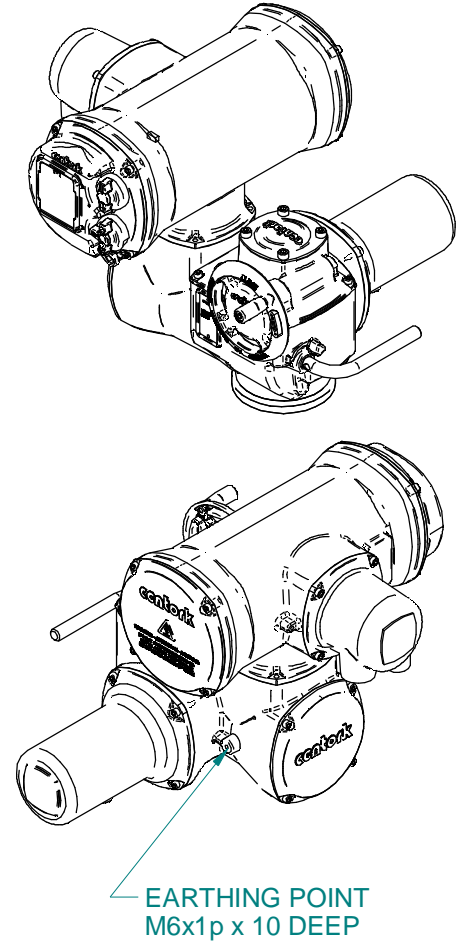
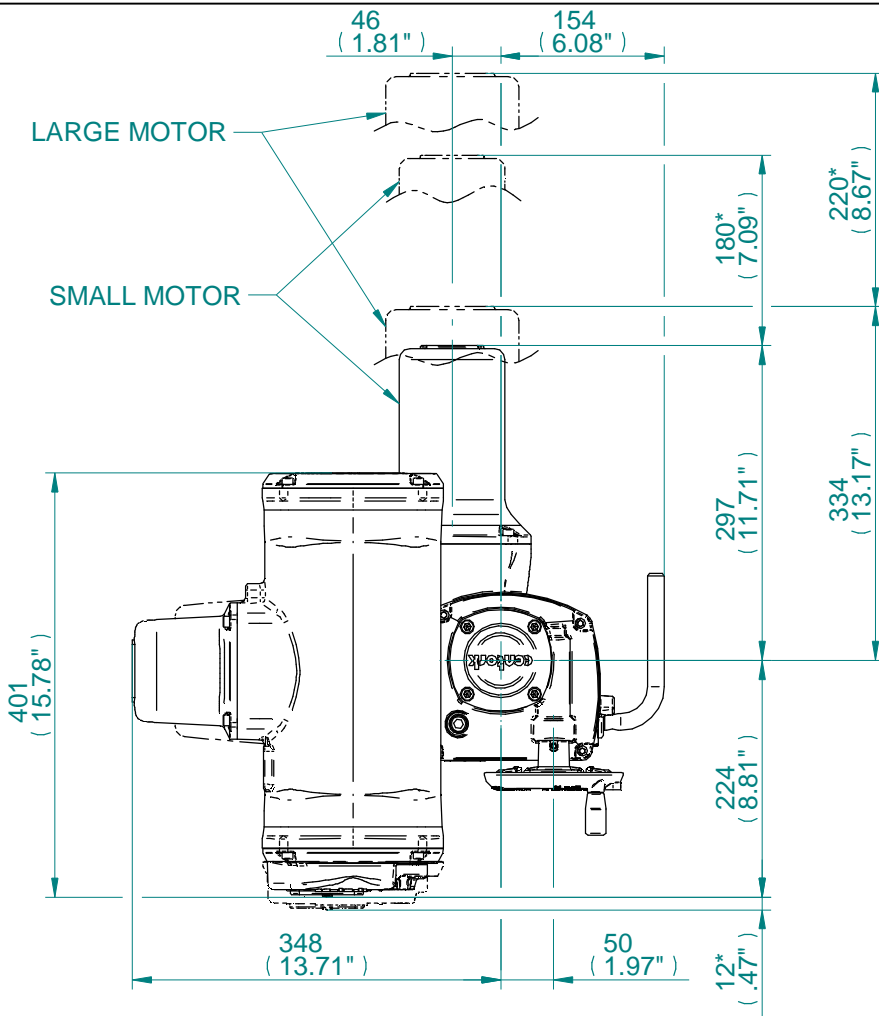


EARTHING POINT  
M6x1p x 10 DEEP



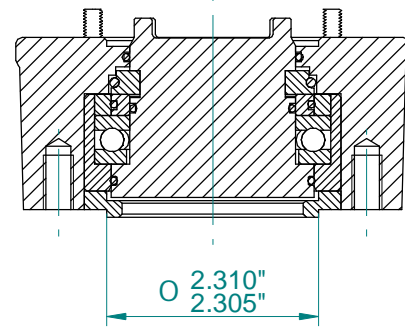
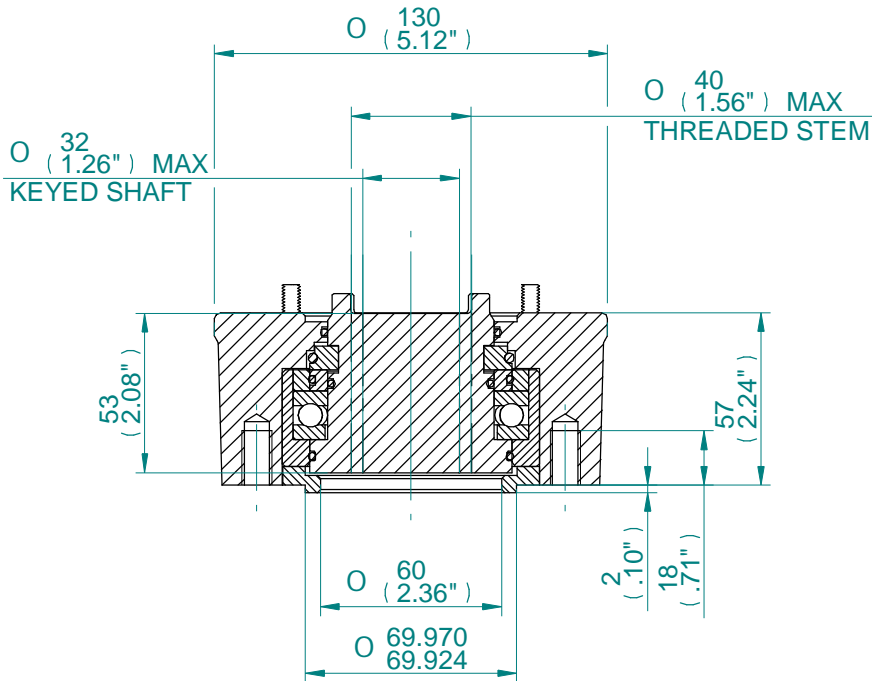
CONDUIT ENTRIES

- NOTE;
- 1) Small motor for 18, 24, 36, 48 (rpm)  
Large motor for 9, 12, 72, 96, 192, 144 (rpm)
  - 2) Non Thrust Base & Thrust Base (Optional)
  - 3) Pot drive is optional as add-on to switch mechanism
  - 4) \* Removal allowance required.

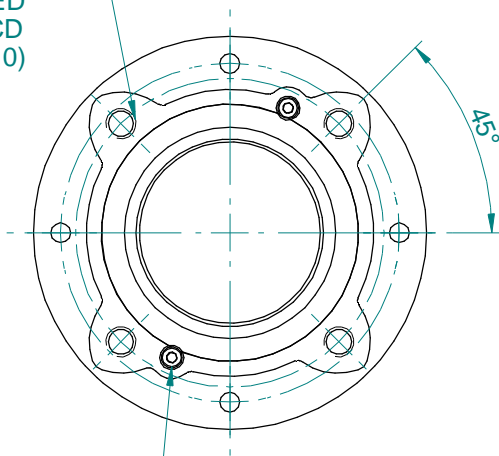


- NOTE;
- 1) Small motor for 18, 24, 36, 48 (rpm)  
Large motor for 9, 12, 72, 96, 192, 144 (rpm)
  - 2) Non Thrust Base & Thrust Base (Optional)
  - 3) Pot drive is optional as add-on to switch mechanism
  - 4) \* Removal allowance required.

CONDUIT ENTRIES



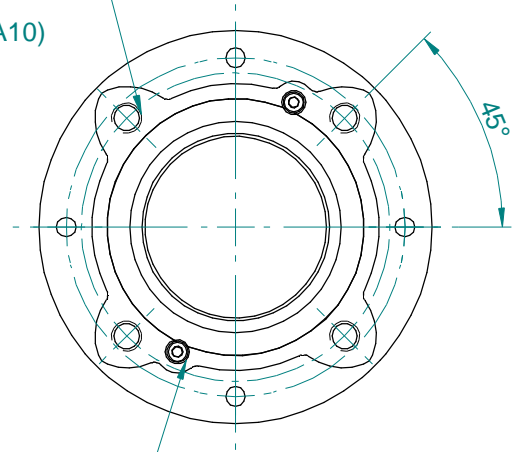
4 HOLES M10\*1.5P  
EQUI-SPACED  
ON A 102 PCD  
(ISO 5210 F10)



2 CAP SCREWS M4.  
REMOVE IN ORDER  
TO WITHDRAW  
DRIVE COUPLING

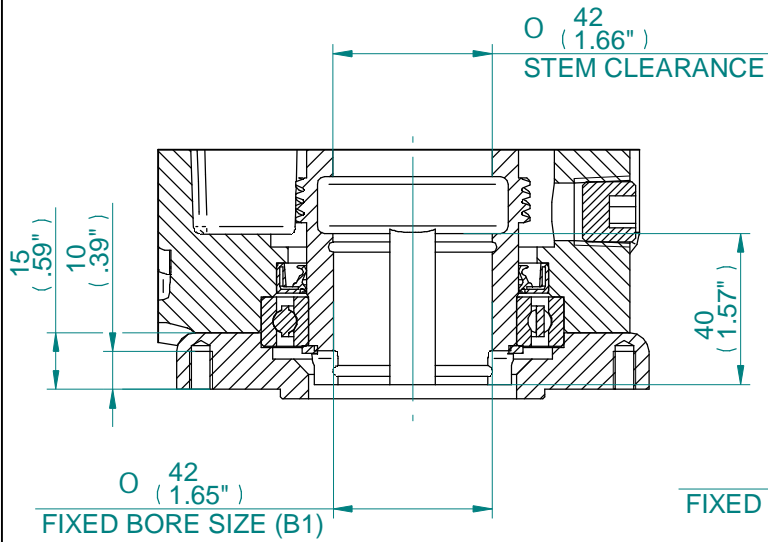
F10 THRUST BASE

4 HOLES 3/8-16 UNC  
EQUI-SPACED  
ON A 4" PCD  
(MSS SP-102 FA10)

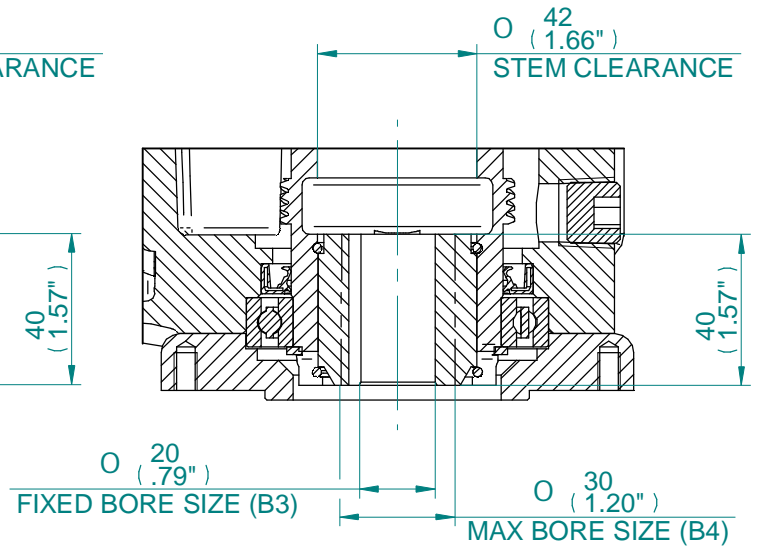


2 CAP SCREWS M4.  
REMOVE IN ORDER  
TO WITHDRAW  
DRIVE COUPLING

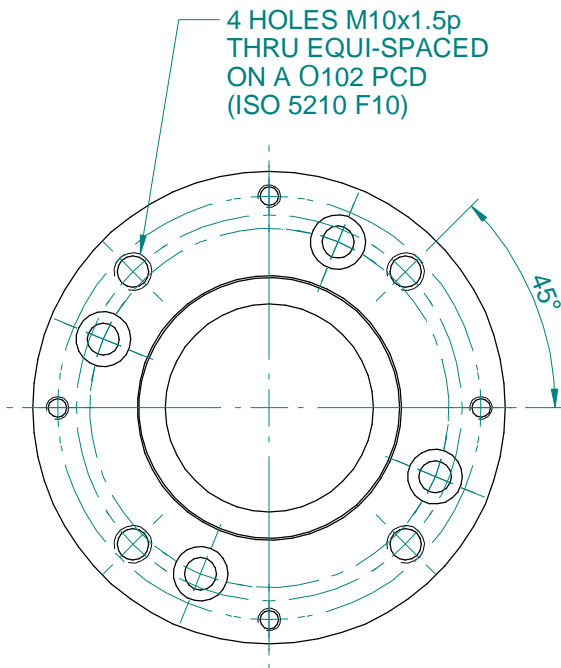
FA10 THRUST BASE



**TYPE 'B1'  
COUPLING DETAILS**

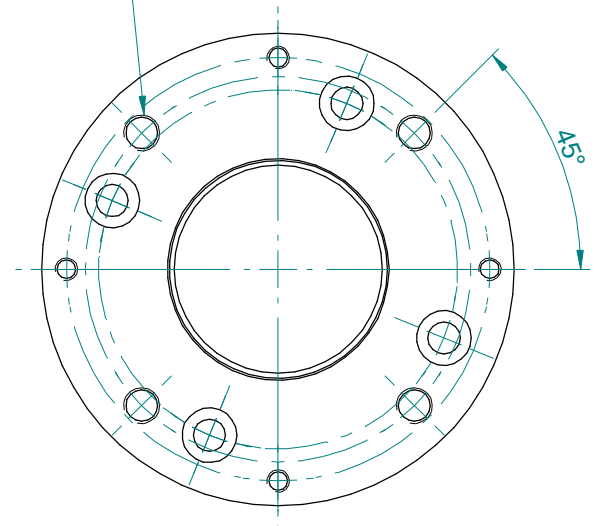


**TYPE 'B3/B4'  
COUPLING DETAILS**



**F10 BASE DETAILS  
FOR 'B1' & 'B3/B4' COUPLINGS**

4 HOLES 3/8"-16 UNC  
THRU EQUI-SPACED  
ON A 4" PCD  
(MSS SP-102 FA10)



**FA10 BASE DETAILS  
FOR 'B1' & 'B3/B4' COUPLING**

