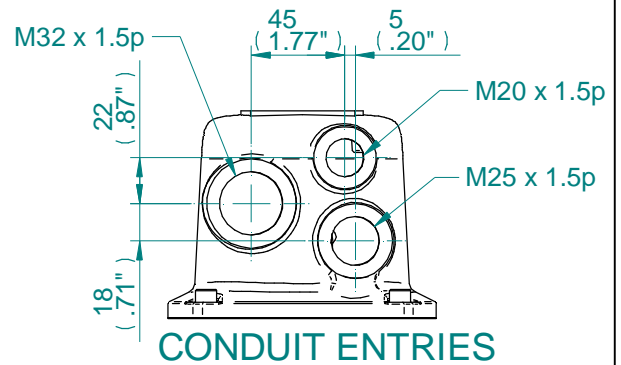
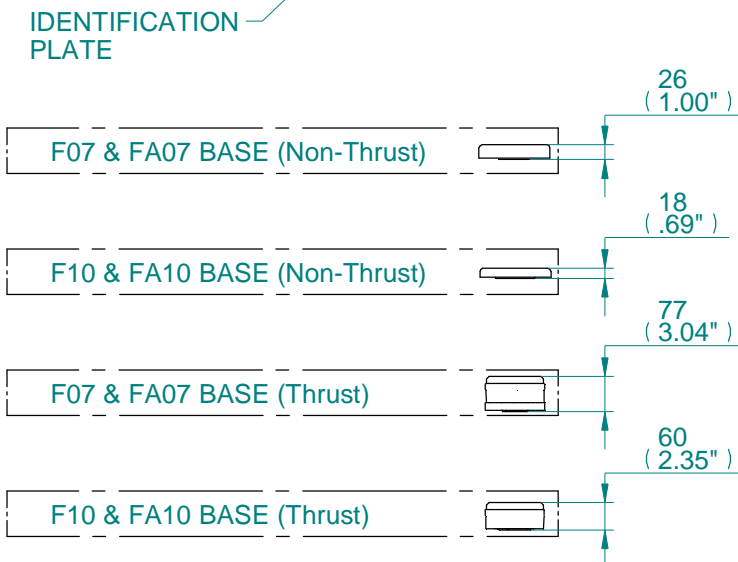
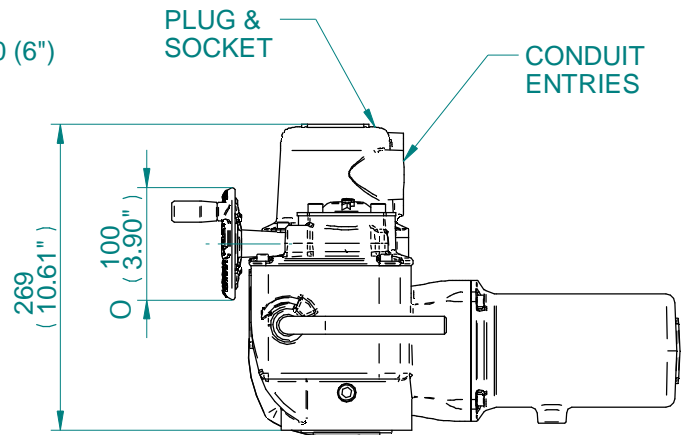
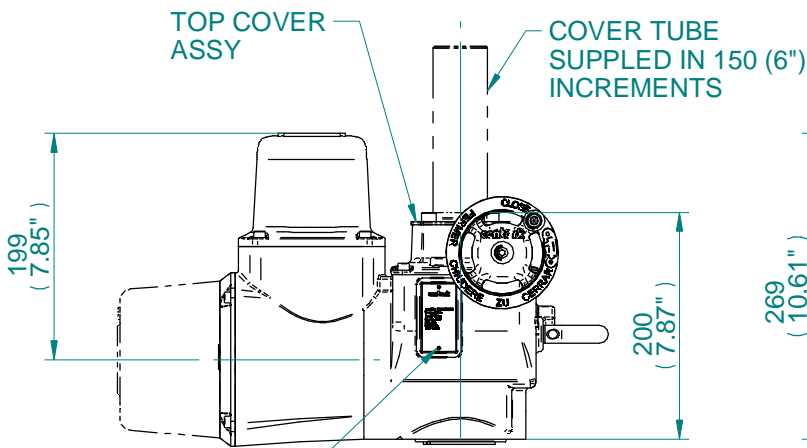
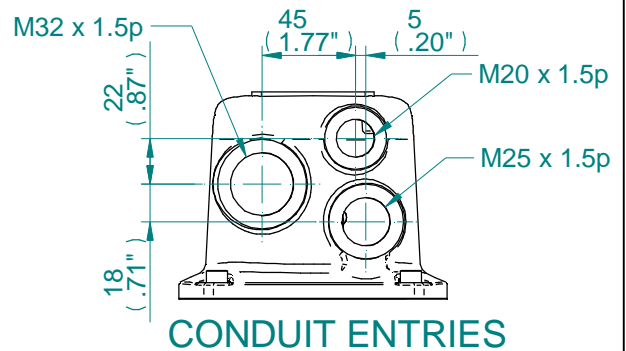
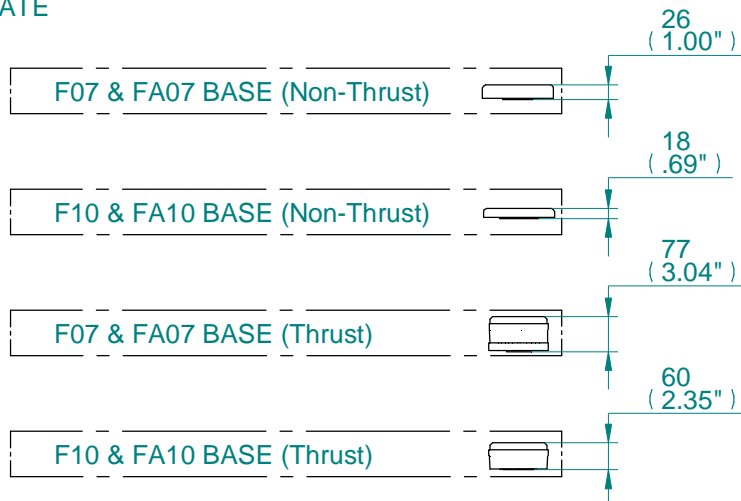
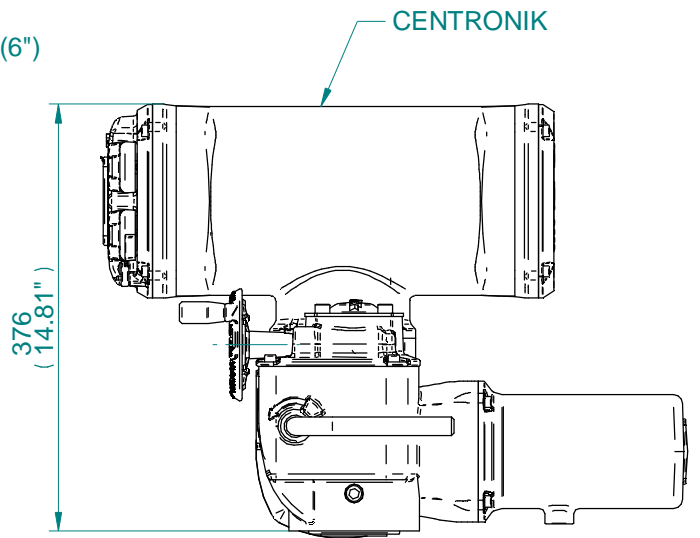
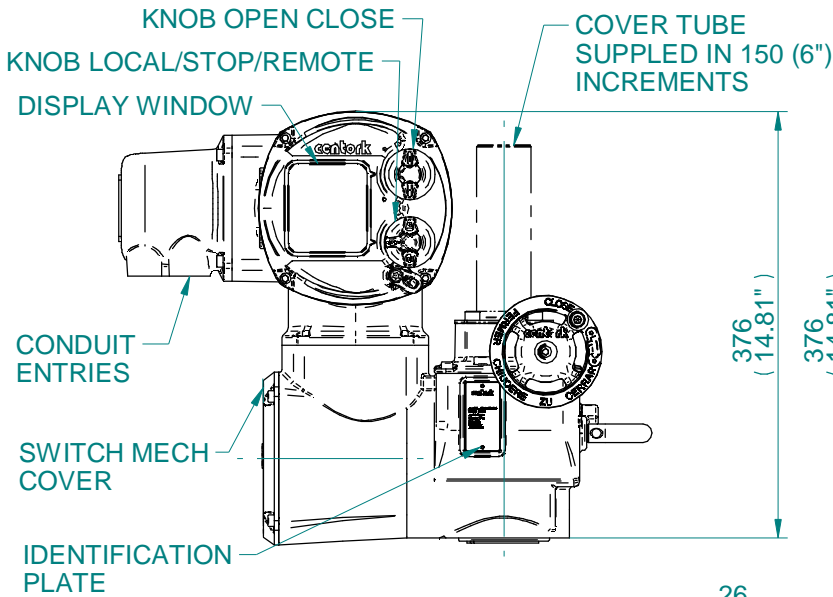
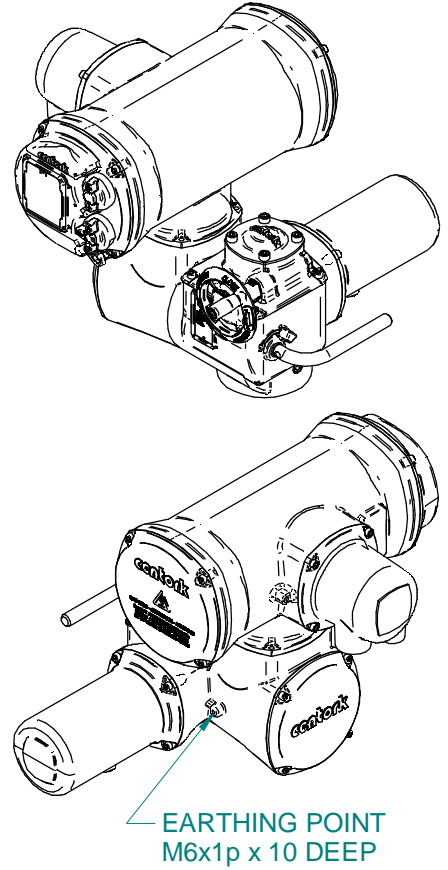
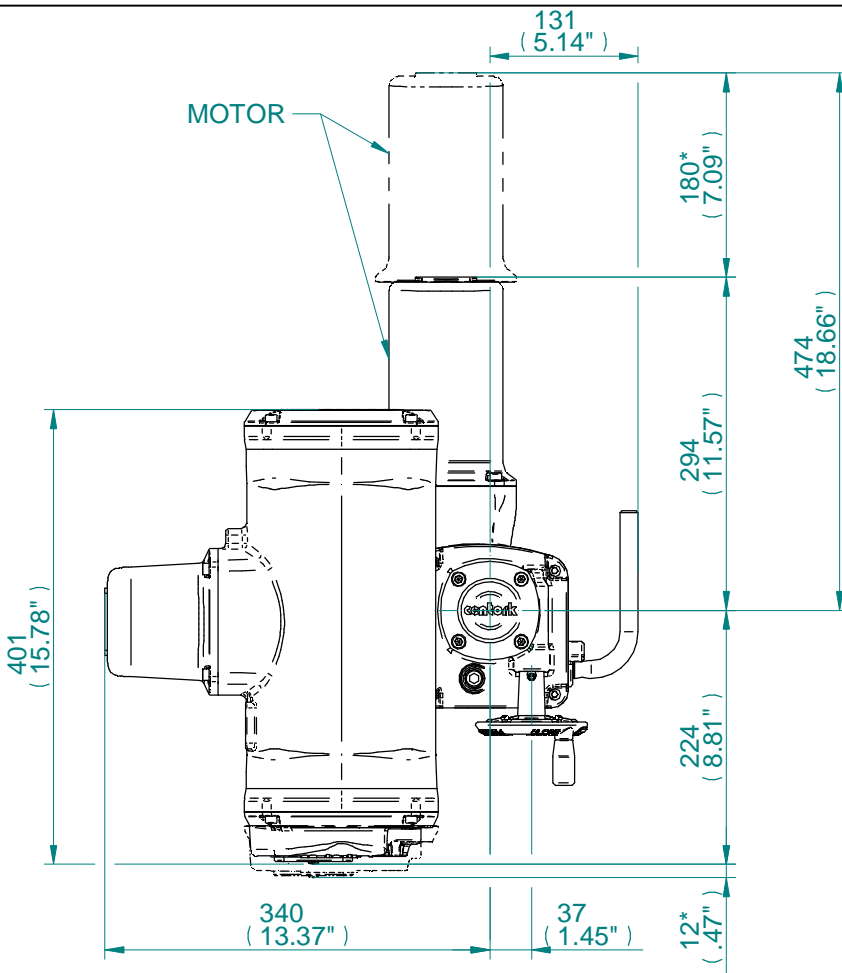


EARTHING POINT
M6x1p x 10 DEEP

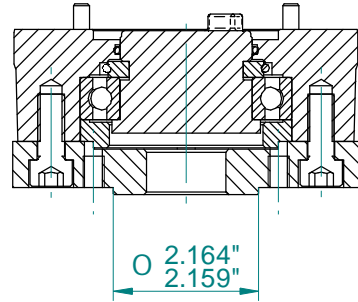
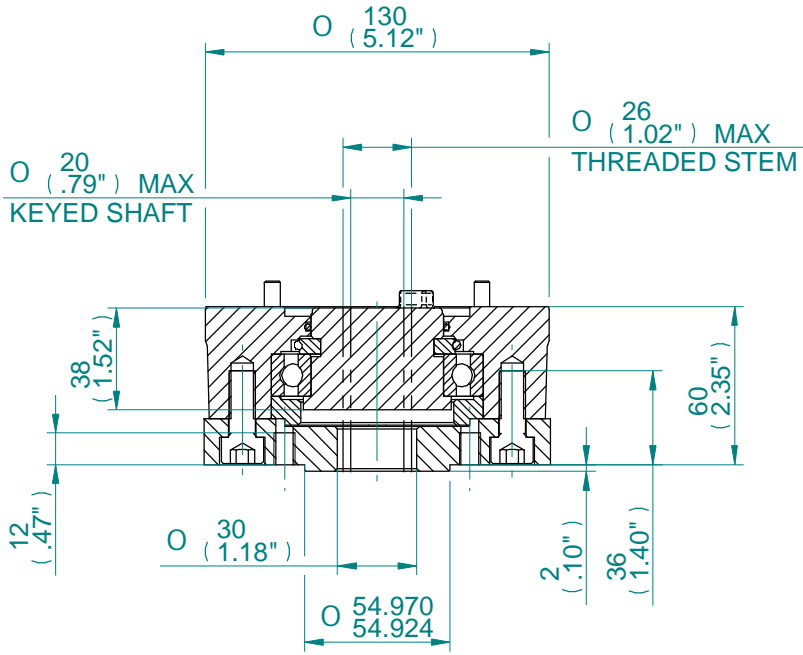


NOTE;

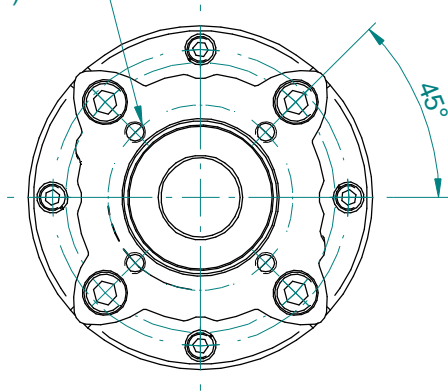
- 1) Motor: 9,12,18,24,36,48,72,96,144,192 (rpm)
- 2) Non Thrust Base & Thrust Base (Optional)
- 3) Pot drive is optional as add-on to switch mechanism
- 4) * Removal allowance required.



NOTE;
 1) Motor: 9,12,18,24,36,48,72,96,144,192 (rpm)
 2) Non Thrust Base & Thrust Base (Optional)
 3) Pot drive is optional as add-on to switch mechanism
 4) * Removal allowance required.

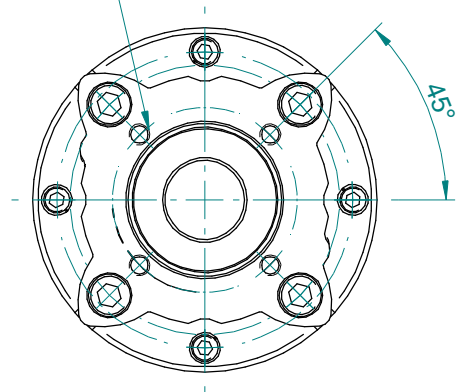


4 HOLES M8*1.5P
EQUI-SPACED
ON A 70 PCD
(ISO 5210 F07)

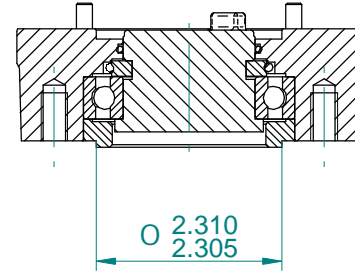
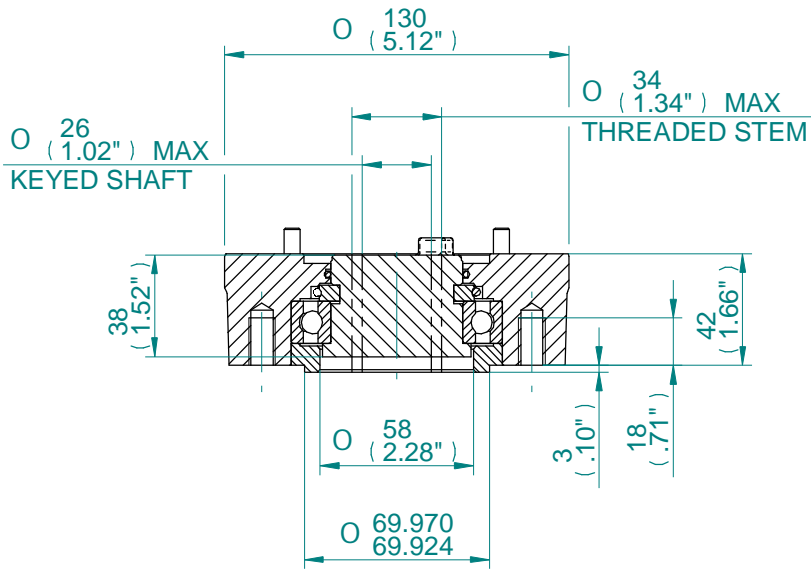


F07 THRUST BASE

4 HOLES 5/16-18UNC
EQUI-SPACED
ON A 69.9 PCD
(MSS SP-102 FA07)

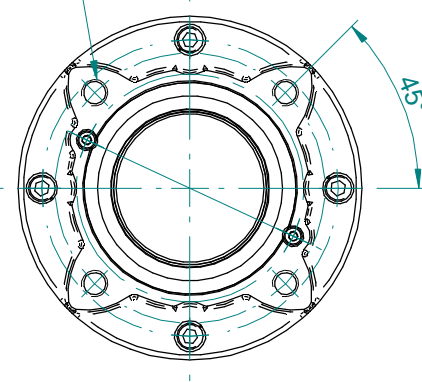
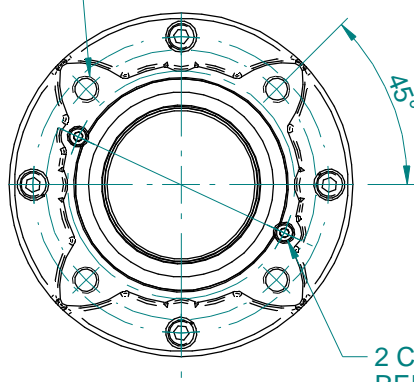


FA07 THRUST BASE



4 HOLES M10*1.5P
EQUI-SPACED
ON A 102 PCD
(ISO 5210 F10)

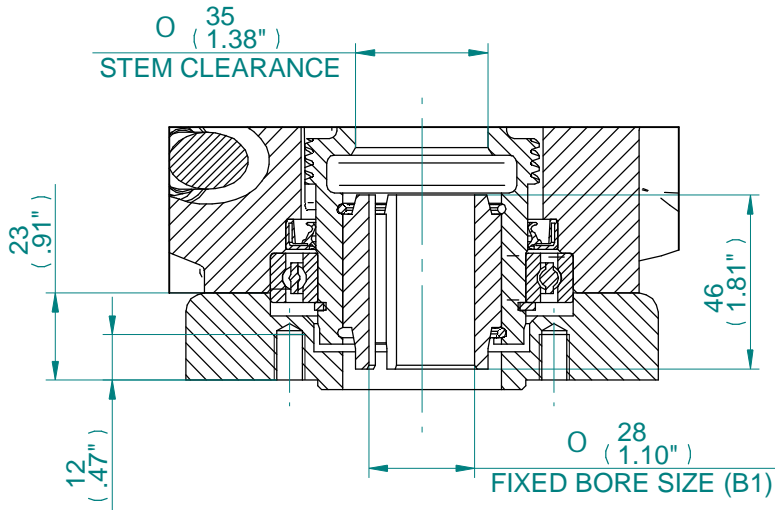
4 HOLES 3/8-16 UNC
EQUI-SPACED
ON A 4" PCD
(MSS SP-102 FA10)



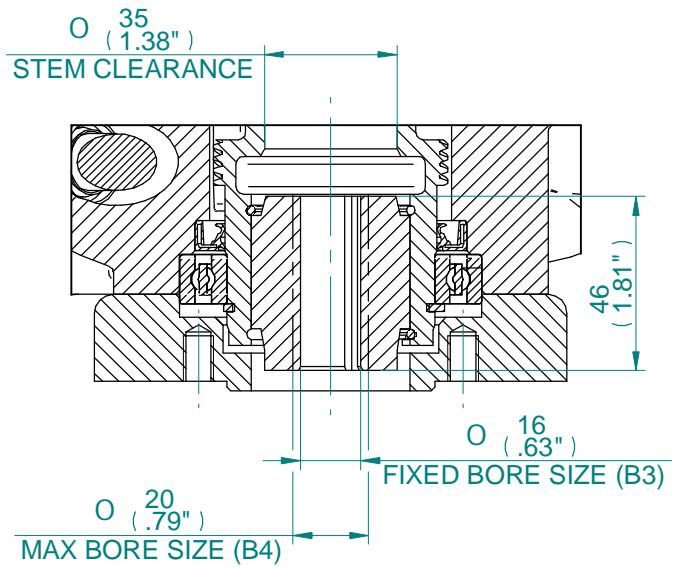
2 CAP SCREWS M4.
REMOVE INORDER
TO WITHDRAW
DRIVE COUPLING

F10 THRUST BASE

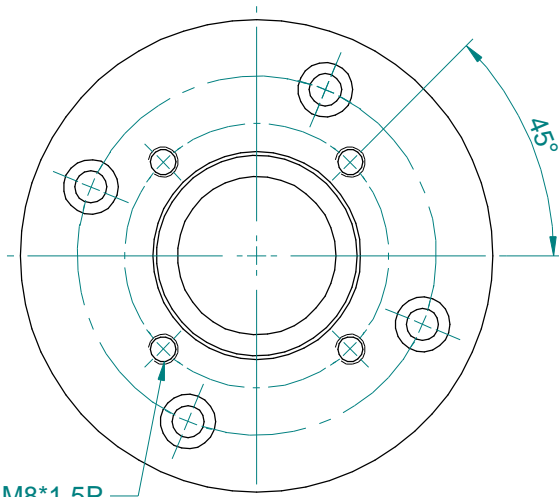
FA10 THRUST BASE



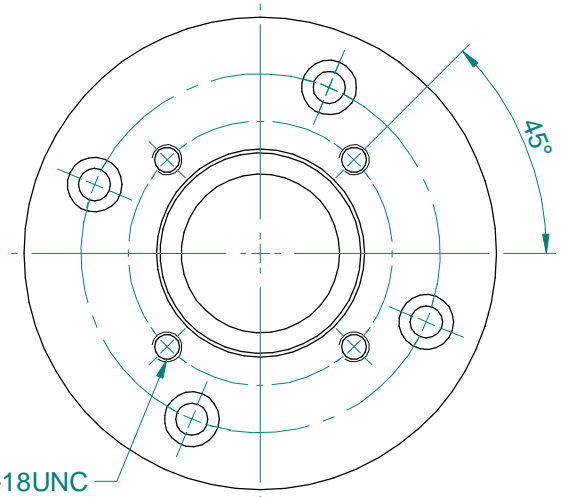
F07 TYPE 'B1'
COUPLING DETAILS



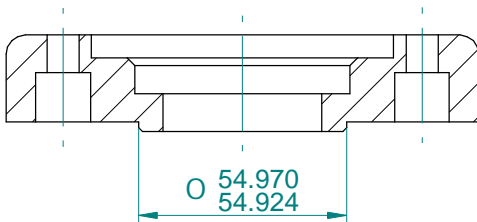
F07 TYPE 'B3/B4'
COUPLING DETAILS



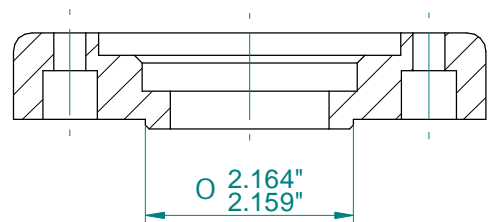
4 HOLES M8*1.5P
EQUI-SPACED
ON A 70 PCD
(ISO 5210 F07)



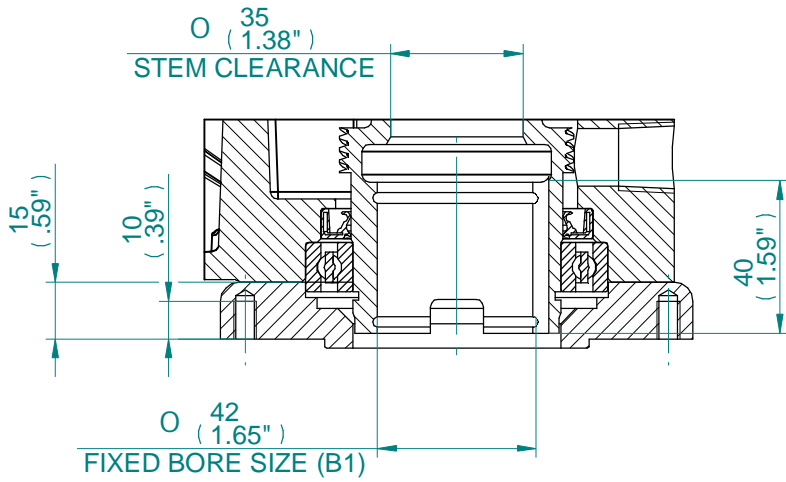
4 HOLES 5/16-18UNC
EQUI-SPACED
ON A 69.9 PCD
(MSS SP-102 FA07)



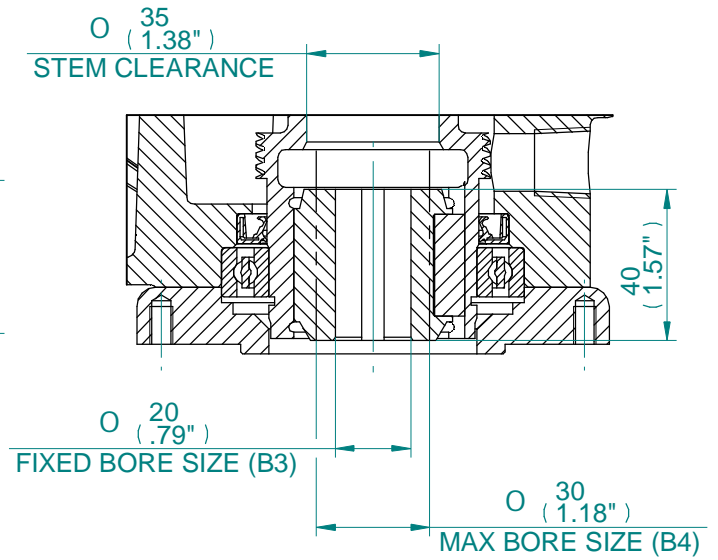
F07 BASE DETAILS
FOR 'B1' & 'B3/B4' COUPLINGS



FA07 BASE DETAILS
FOR 'B1' & 'B3/B4' COUPLINGS

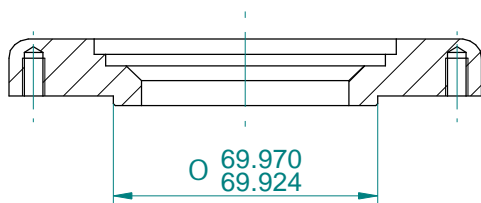
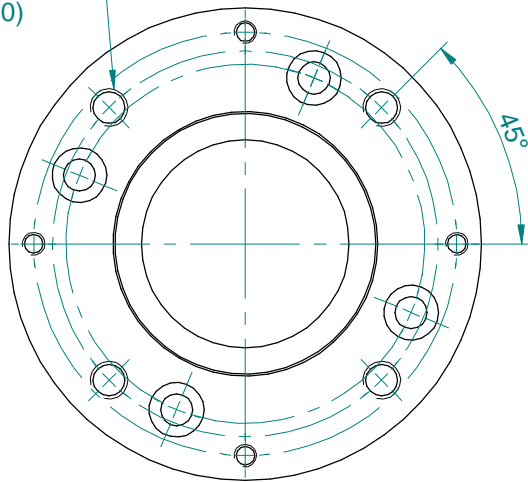


F10 TYPE 'B1'
COUPLING DETAILS



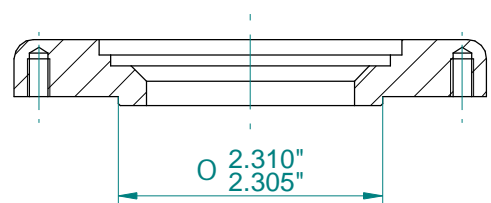
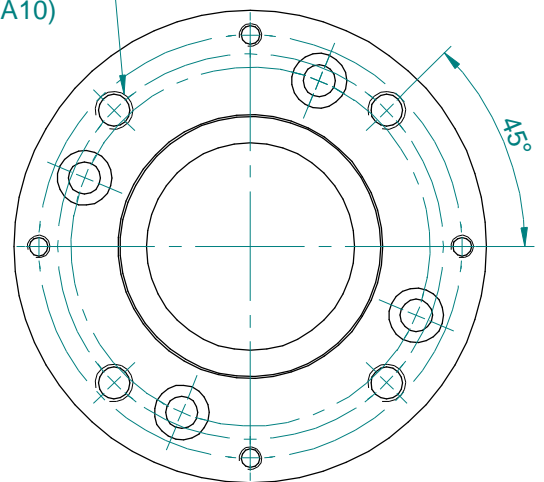
F10 TYPE 'B3/B4'
COUPLING DETAILS

4 HOLES M10*1.5p
EQUI-SPACED
ON A 102 PCD
(ISO 5210 F10)



F10 BASE DETAILS
FOR 'B1' & 'B3/B4' COUPLINGS

4 HOLES 3/8-16 UNC
EQUI-SPACED
ON A 4" PCD
(MSS SP-102 FA10)



FA10 BASE DETAILS
FOR 'B1' & 'B3/B4' COUPLINGS