

CIRCUIT IS DRAWN FOR A VALVE IN THE FULLY CLOSED POSITION

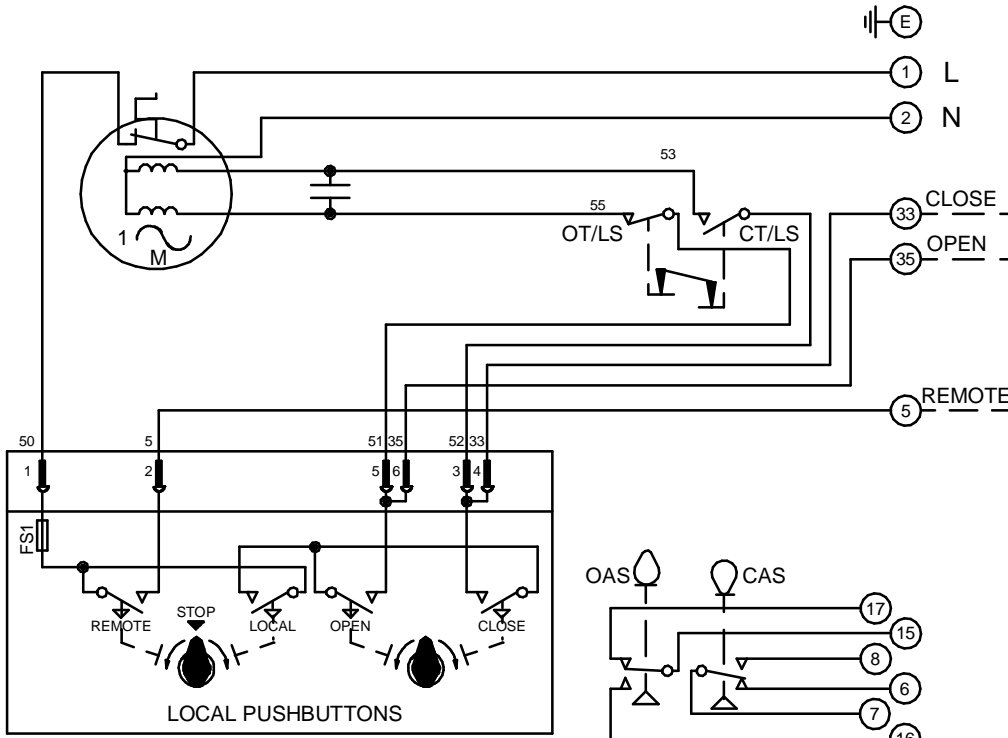
Circuit Diagram No - Issue No

2P02Q30 - 04

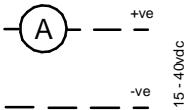
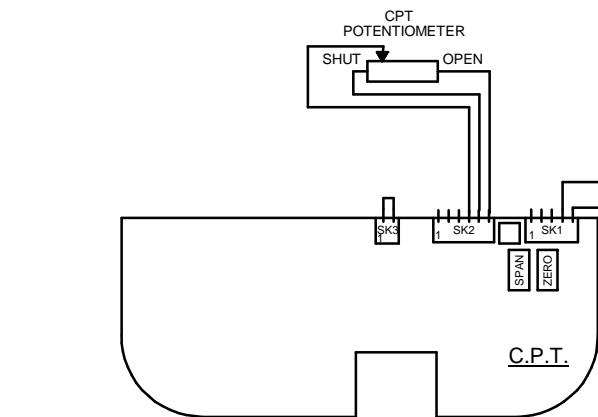
CIRCUIT IS DRAWN FOR A VALVE IN THE FULLY CLOSED POSITION

WARNING

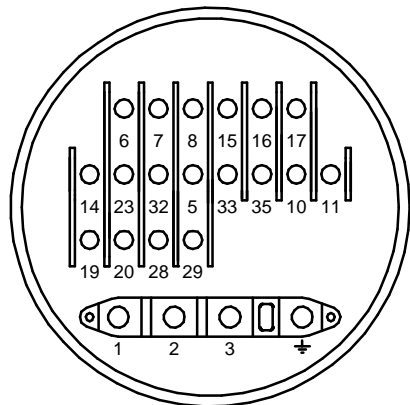
IT IS ESSENTIAL THAT REMOTE CONTROL CIRCUITS ARE DESIGNED SO THAT AN OPEN AND A CLOSE SIGNAL CAN NEVER BE APPLIED SIMULTANEOUSLY.



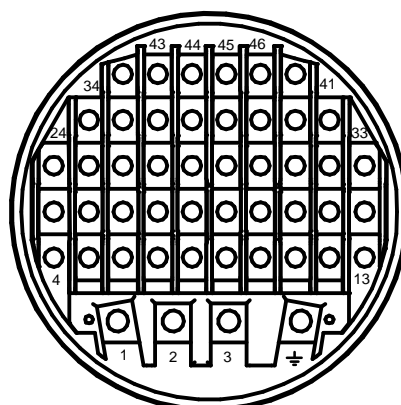
S.P.D.T. SWITCH OR EQUIVALENT



OT/LS - OPEN TORQUE/LIMIT SWITCH.
CT/LS - CLOSE TORQUE/LIMIT SWITCH.
OAS - OPEN AUXILIARY SWITCH.
CAS - CLOSE AUXILIARY SWITCH.



TERMINAL BUNG
(FOR WT ACTUATOR)



TERMINAL BUNG
(FOR WTC ACTUATOR)

WIRES ARE IDENTIFIED AT EACH END BY TERMINAL NUMBER OR NUMBER SHOWN.

ALLOW MINIMUM 2 SECOND DELAY WHEN CONTROL SIGNALS ARE REVERSED TO ENSURE MOTOR REVERSAL.

FS1 - 6.3A

Iss	Date	Chkd	Revision Details
02		PGS	SIMILAR TO 2P02Q30 JOB NO ----
03	190292	T.W	WARNING NOTE ADDED. CHECKED K.S 190292
04	260417	JS	PAK TERMINAL BUNG INTRODUCED FOR WTC APPLICATION EC7024.

centork

ROTORK CONTROLS (INDIA) PRIVATE LTD
28B, AMBATTUR INDUSTRIAL ESTATE (NORTH),
AMBATTUR, CHENNAI - 600 098 INDIA.
Tel:044-39555600

Q - STANDARD + PUSHBUTTONS +
POT.+ EXT. POWERED C.P.T.

Drawn by: P.W
Date : 230590
Base WD: 2P02Q30
Job No : ---
MI No : .

Circuit Diagram No
2P02Q30
Issue No
4