

CIRCUIT IS DRAWN FOR A VALVE IN THE FULLY CLOSED POSITION

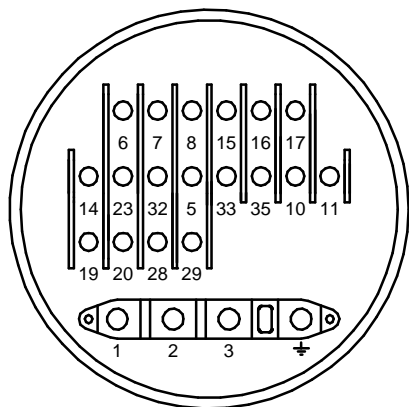
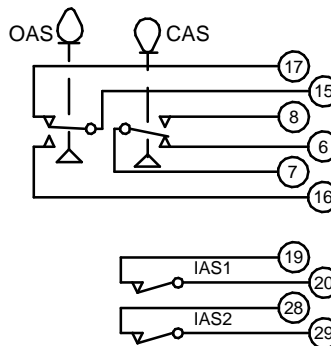
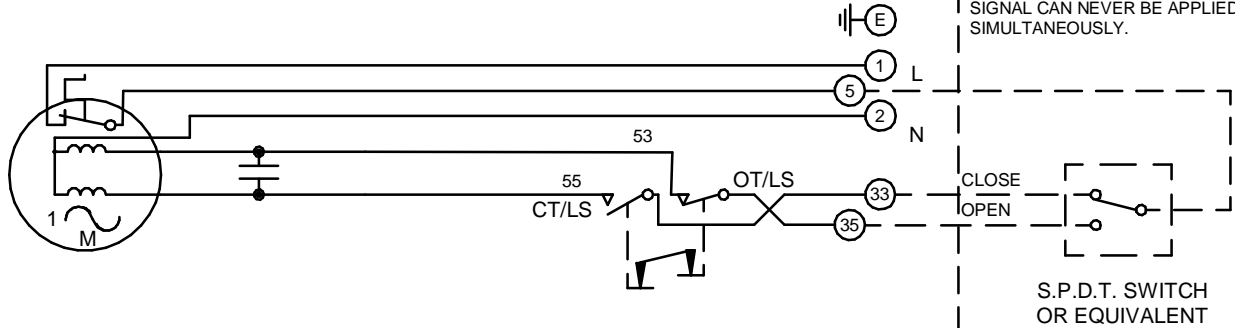
CIRCUIT IS DRAWN FOR A VALVE IN THE FULLY CLOSED POSITION

Circuit Diagram No - Issue No

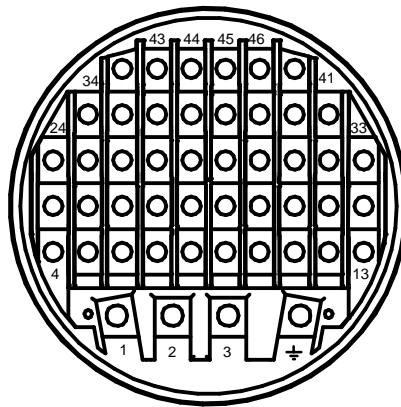
2S05Q00A - 05

WARNING

IT IS ESSENTIAL THAT REMOTE CONTROL CIRCUITS ARE DESIGNED SO THAT AN OPEN AND A CLOSE SIGNAL CAN NEVER BE APPLIED SIMULTANEOUSLY.



TERMINAL BUNG
(FOR WT ACTUATOR)



TERMINAL BUNG
(FOR WTC ACTUATOR)

OT/LS - OPEN TORQUE/LIMIT SWITCH.
 CT/LS - CLOSE TORQUE/LIMIT SWITCH.
 OAS - OPEN AUXILIARY SWITCH.
 CAS - CLOSE AUXILIARY SWITCH.
 IAS1 & 2 - INTERMEDIATE AUXILIARY SWITCHES ADJUSTABLE TO MAKE OR BREAK INDIVIDUALLY AT ANY POSITION.
 WIRES ARE IDENTIFIED AT EACH END BY TERMINAL NUMBER OR NUMBER SHOWN.
 ALLOW MINIMUM 2 SECOND DELAY WHEN CONTROL SIGNALS ARE REVERSED TO ENSURE MOTOR REVERSAL.

| Iss | Date | Chkd | Revision Details |
|-----|--------|------|---|
| 03 | | PGS | SIMILAR TO 2S05Q00A JOB NO ---- |
| 04 | 190292 | T.W | WARNING NOTE ADDED. CHECKED K.S 190292 |
| 05 | 260417 | JS | PAK TERMINAL BUNG INTRODUCED FOR WTC APPLICATION EC7024. |

centork

ROTORK CONTROLS (INDIA) PRIVATE LTD
 28B, AMBATTUR INDUSTRIAL ESTATE (NORTH),
 AMBATTUR, CHENNAI - 600 098 INDIA.
 Tel:044-39555600

Q - STANDARD + 2 INTERMEDIATE SWITCHES.

Drawn by: K.S
 Date : 020490
 Base WD: 2S05Q00A
 Job No : ---
 MI No : ..

Circuit Diagram No
2S05Q00A
 Issue No
5