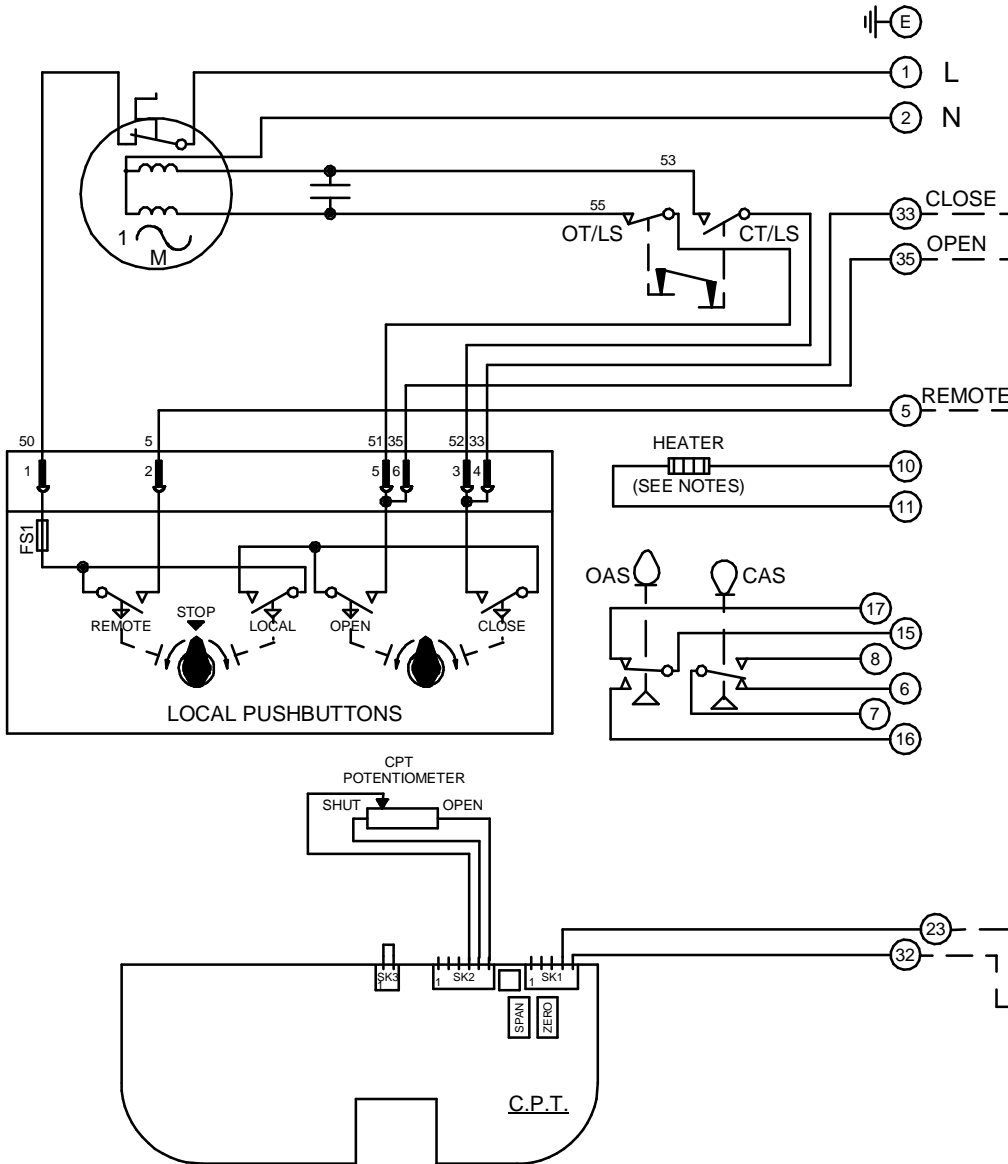


CIRCUIT IS DRAWN FOR A VALVE IN THE FULLY CLOSED POSITION

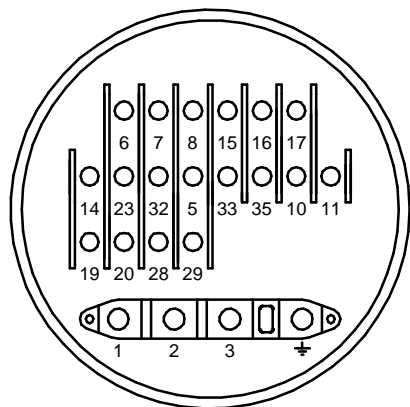
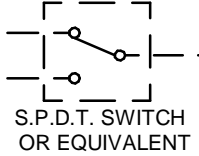
Circuit Diagram No - Issue No

2P32Q30 - 04

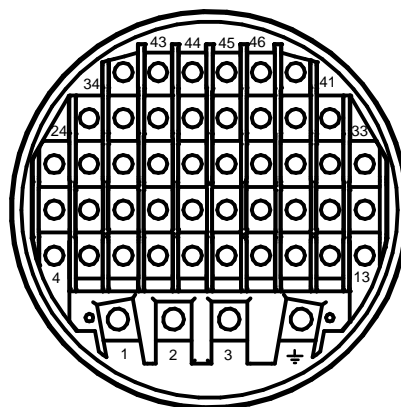
CIRCUIT IS DRAWN FOR A VALVE IN THE FULLY CLOSED POSITION



**WARNING**  
IT IS ESSENTIAL THAT REMOTE CONTROL CIRCUITS ARE DESIGNED SO THAT AN OPEN AND A CLOSE SIGNAL CAN NEVER BE APPLIED SIMULTANEOUSLY.



TERMINAL BUNG  
( FOR WT ACTUATOR )



TERMINAL BUNG  
( FOR WTC ACTUATOR )

OT/LS - OPEN TORQUE/LIMIT SWITCH.  
CT/LS - CLOSE TORQUE/LIMIT SWITCH.  
OAS - OPEN AUXILIARY SWITCH.  
CAS - CLOSE AUXILIARY SWITCH.

WIRES ARE IDENTIFIED AT EACH END BY TERMINAL NUMBER OR NUMBER SHOWN.

ALLOW MINIMUM 2 SECOND DELAY WHEN CONTROL SIGNALS ARE REVERSED TO ENSURE MOTOR REVERSAL.

FS1 - 6.3A

12W (MAX) HEATER FITTED AS STANDARD. UNLESS OTHERWISE REQUESTED, HEATERS FITTED WILL BE:

120V (2K OHM) OR 240V (5.62K OHM).

Iss	Date	Chkd	Revision Details
02		PGS	SIMILAR TO 2P32Q30 JOB NO ----
03	190292	T.W	WARNING NOTE ADDED. CHECKED K.S 190292
04	260417	JS	PAK TERMINAL BUNG INTRODUCED FOR WTC APPLICATION EC7024.

**centork**

ROTORK CONTROLS (INDIA) PRIVATE LTD  
28B, AMBATTUR INDUSTRIAL ESTATE (NORTH),  
AMBATTUR, CHENNAI - 600 098 INDIA.  
Tel:044-39555600

Q - STANDARD + PUSHBUTTONS  
+HEATER + POT.+ EXT. C.P.T.

Drawn by: P.W.  
Date : 230590  
Base WD: 2P32Q30  
Job No : ---  
MI No : .

Circuit Diagram No  
**2P32Q30**  
Issue No  
**4**