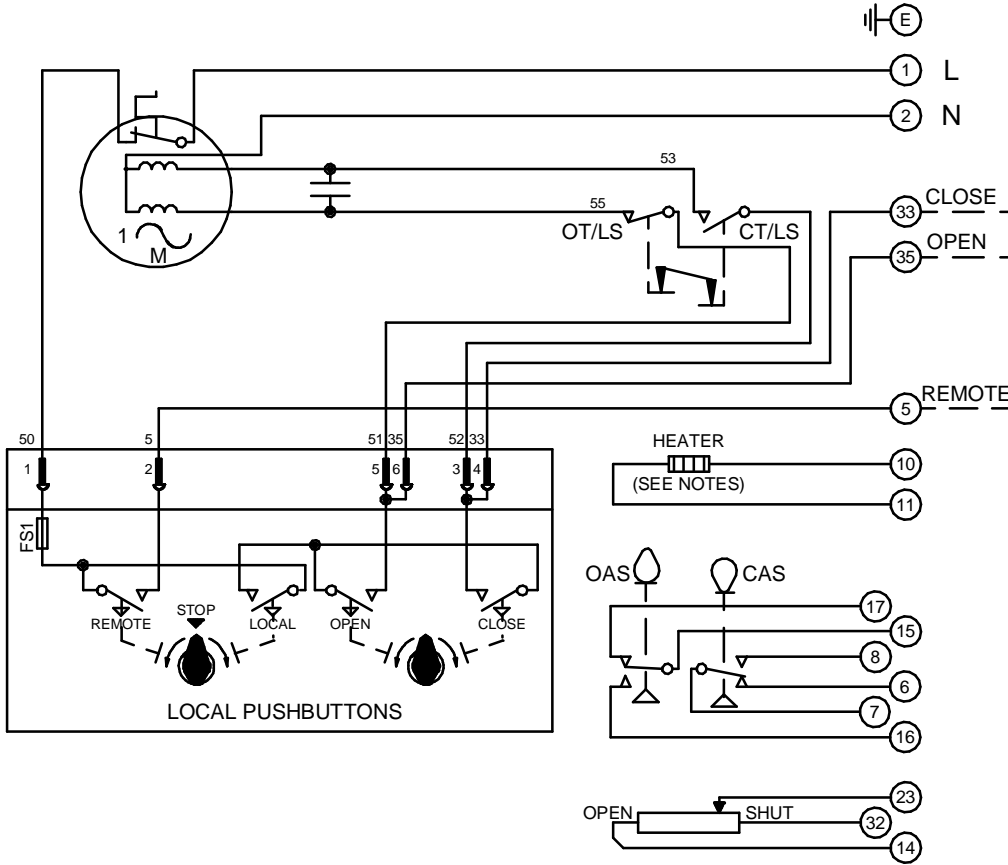


CIRCUIT IS DRAWN FOR A VALVE IN THE FULLY CLOSED POSITION

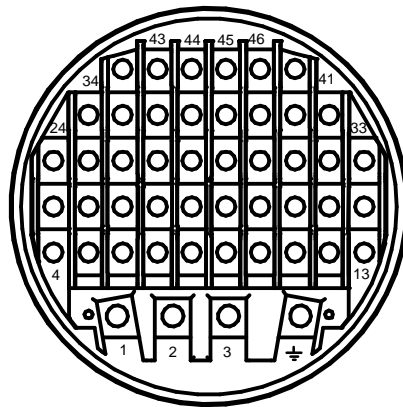
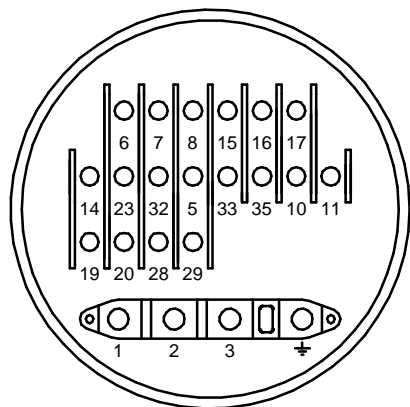
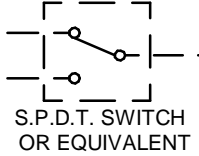
Circuit Diagram No - Issue No

2P32Q00 - 03

CIRCUIT IS DRAWN FOR A VALVE IN THE FULLY CLOSED POSITION



**WARNING**  
IT IS ESSENTIAL THAT REMOTE CONTROL CIRCUITS ARE DESIGNED SO THAT AN OPEN AND A CLOSE SIGNAL CAN NEVER BE APPLIED SIMULTANEOUSLY.



OT/LS - OPEN TORQUE/LIMIT SWITCH.  
CT/LS - CLOSE TORQUE/LIMIT SWITCH.  
OAS - OPEN AUXILIARY SWITCH.  
CAS - CLOSE AUXILIARY SWITCH.

WIRES ARE IDENTIFIED AT EACH END BY TERMINAL NUMBER OR NUMBER SHOWN.

ALLOW MINIMUM 2 SECOND DELAY WHEN CONTROL SIGNALS ARE REVERSED TO ENSURE MOTOR REVERSAL.

FS1 - 6.3A  
12W (MAX) HEATER FITTED AS STANDARD. UNLESS OTHERWISE REQUESTED, HEATERS FITTED WILL BE :  
120V (2K OHM) OR 240V (5.62K OHM).

Iss	Date	Chkd	Revision Details
01		PGS	SIMILAR TO 2P32Q00 JOB NO ----
02	190292	T.W	WARNING NOTE ADDED. CHECKED K.S 190292
03	260417	JS	PAK TERMINAL BUNG INTRODUCED FOR WTC APPLICATION EC7024.

**centork**

ROTORK CONTROLS (INDIA) PRIVATE LTD  
28B, AMBATTUR INDUSTRIAL ESTATE (NORTH),  
AMBATTUR, CHENNAI - 600 098 INDIA.  
Tel:044-39555600

Q - STANDARD + PUSHBUTTONS +  
HEATER + POTENTIOMETER.

Drawn by: K.S  
Date : 300390  
Base WD: 2P32Q00  
Job No : ---  
MI No : .

Circuit Diagram No Issue No  
**2P32Q00 3**