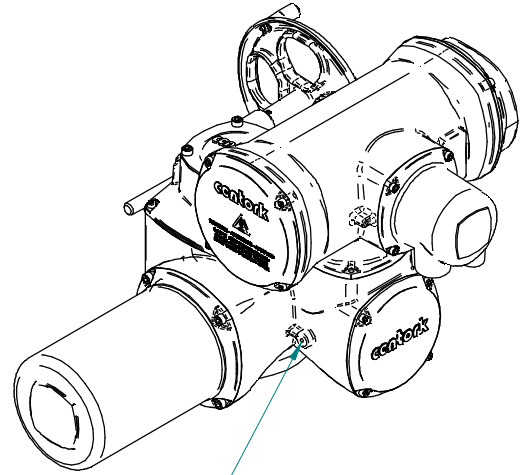
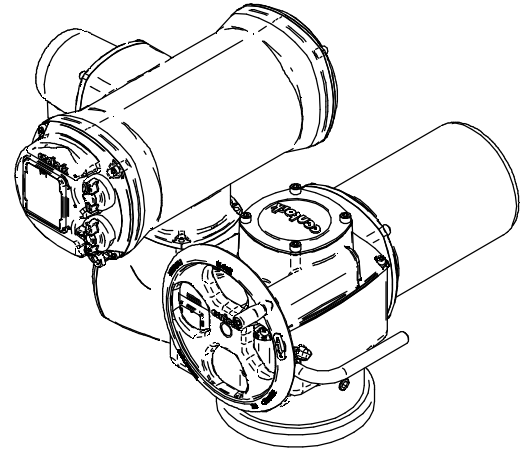
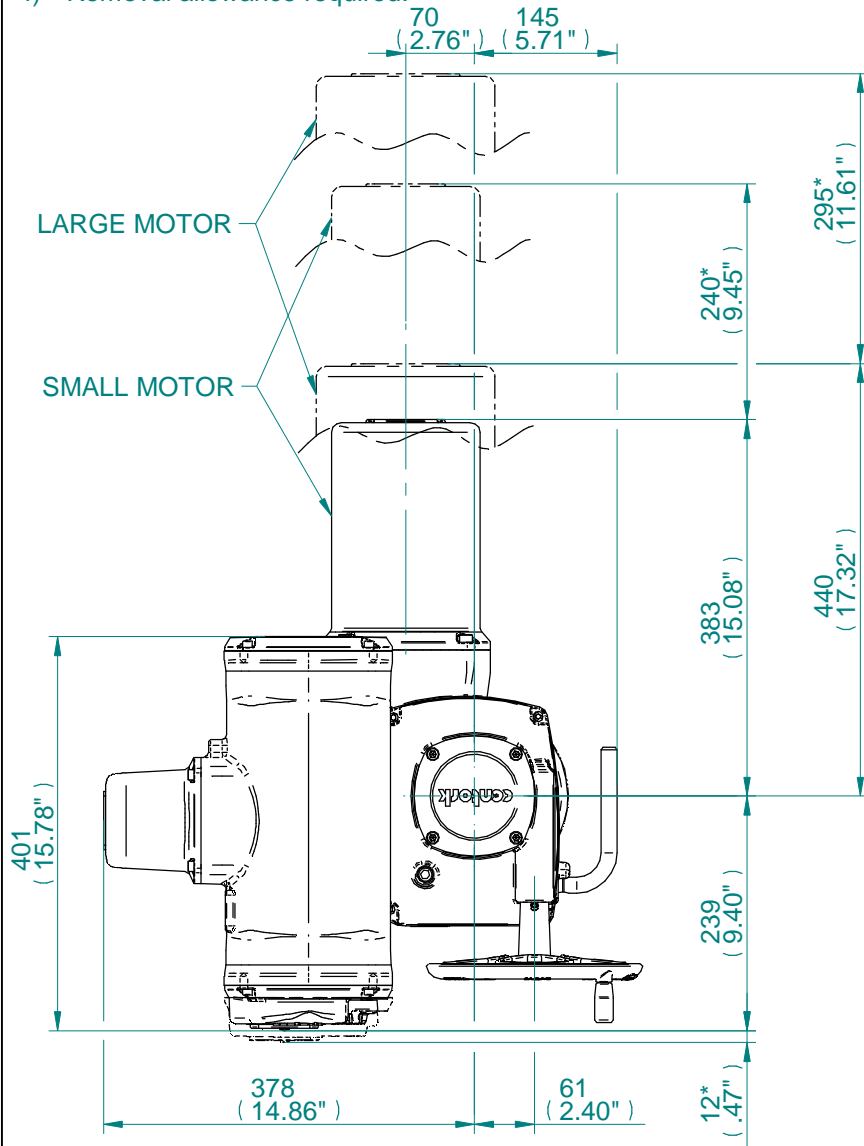


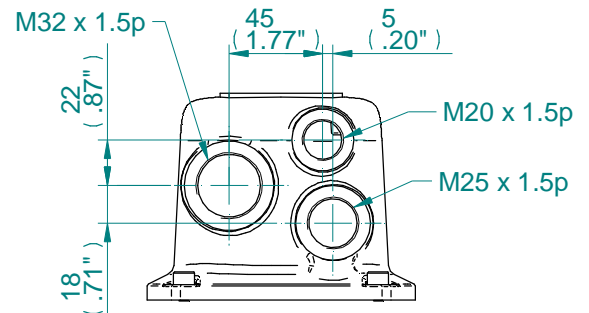
**CONDUIT ENTRIES**

NOTE;  
 1) Small motor: 9,12,18,24,36,48,72,96,144,192 rpm (200/250 Nm)  
                   9,12,18,24,36,48 rpm (500 Nm)  
 Large motor: 72,96,144,192 rpm (400/500 Nm)  
 2) Non Thrust Base & Thrust Base (Optional)  
 3) Pot drive is optional as add-on to switch mechanism  
 4) \* Removal allowance required.

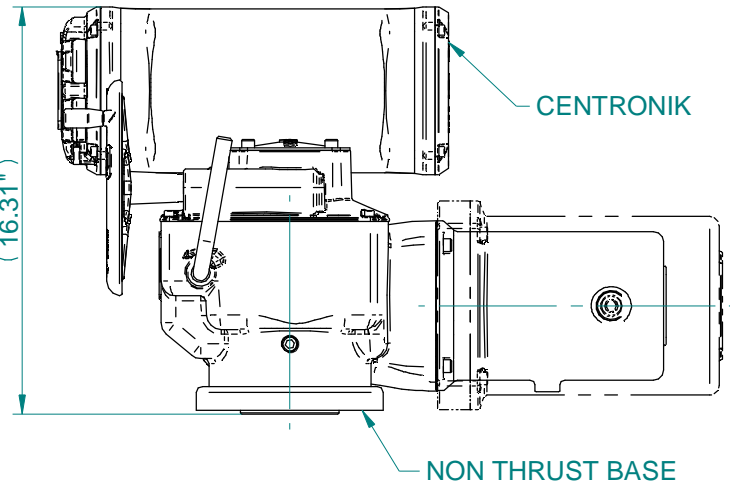
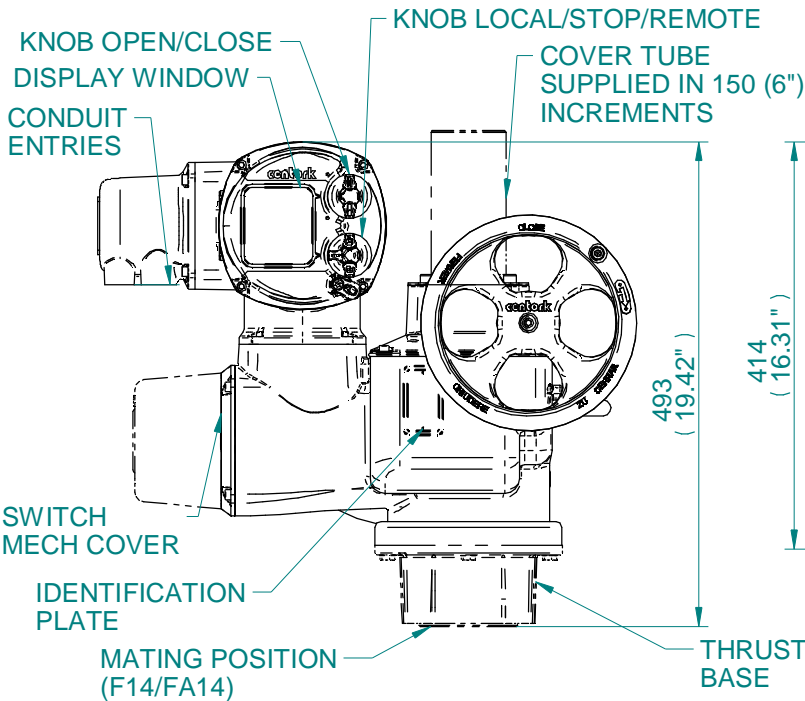
- NOTE;
- 1) Small motor: 9,12,18,24,36,48,72,96,144,192 rpm (200/250 Nm)  
9,12,18,24,36,48 rpm (500 Nm)
  - 2) Large motor: 72,96,144,192 rpm (400/500 Nm)
  - 3) Non Thrust Base & Thrust Base (Optional)
  - 4) Pot drive is optional as add-on to switch mechanism
  - 4) \* Removal allowance required.



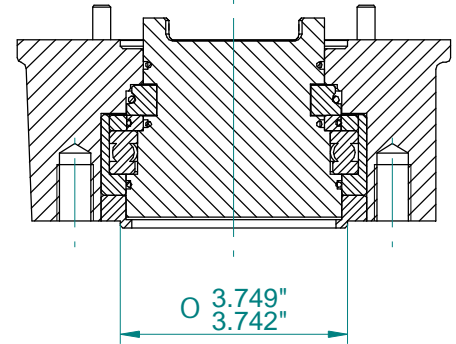
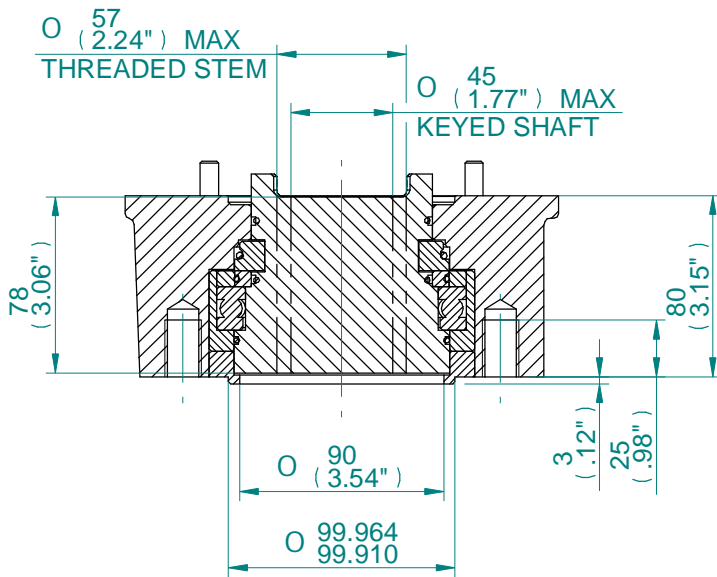
EARTHING POINT  
M6x1p x 10 DEEP



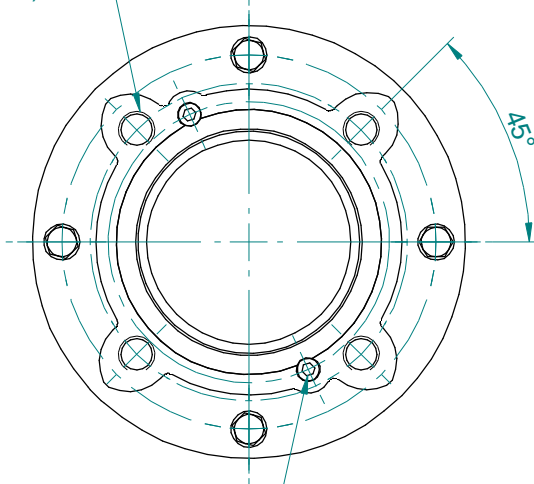
CONDUIT ENTRIES



Title <b>DIMENSION DATA SHEET FOR CENTORK CK250 &amp; CK500 WITH CENTRONIK</b>		Date 280314	A4	Doc Number <b>DOC5013</b>	Ver No <b>1</b>	Scale <b>NTS</b>	Sheet No <b>2 of 4</b>
---	--	----------------	----	------------------------------	--------------------	---------------------	---------------------------



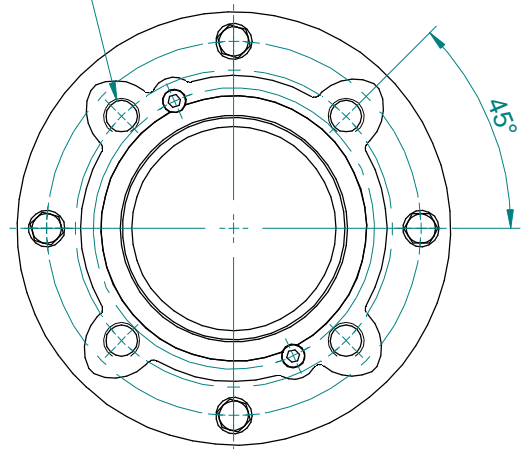
4 HOLES M16\*2p  
EQUI-SPACED  
ON A 140 PCD  
(ISO 5210 F14)



2 CAP SCREWS M6.  
REMOVE IN ORDER  
TO WITHDRAW  
DRIVE COUPLING

F14 THRUST BASE

4 HOLES 5/8-11UNC  
EQUI-SPACED  
ON A 5.5' PCD  
(MSS SP-102 FA14)



FA14 THRUST BASE

Title

DIMENSION DATA SHEET FOR  
CENTORK CK250 & CK500 F14/FA14 THRUST BASES

Date

280314

A4

Doc Number

DOC5013

Ver No

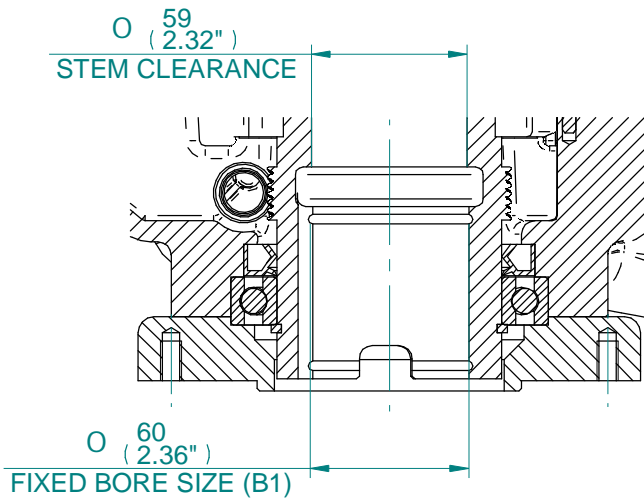
1

Scale

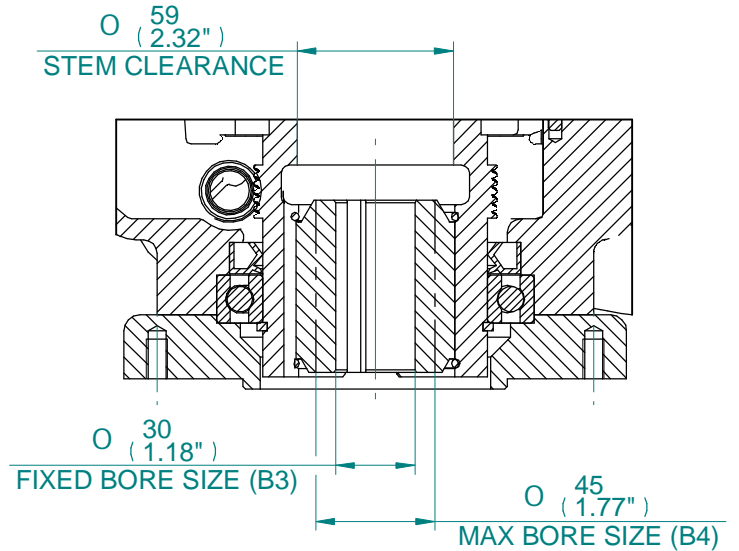
NTS

Sheet No

3 of 4

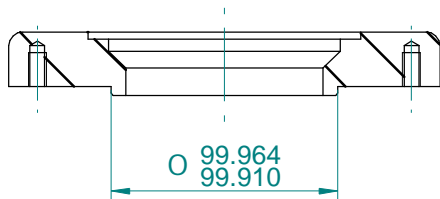
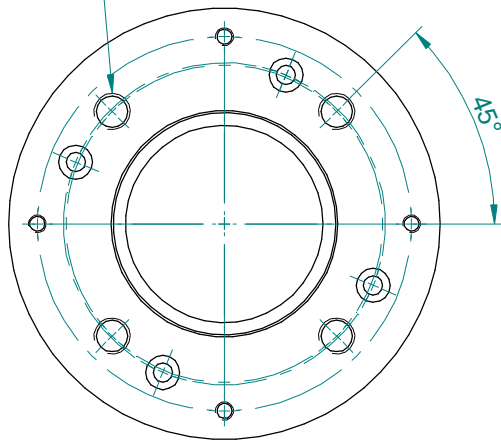


TYPE 'B1'  
COUPLING DETAILS



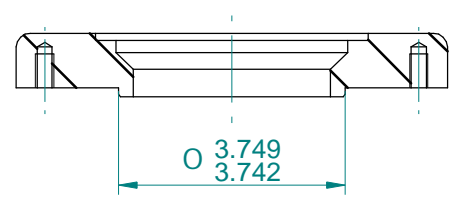
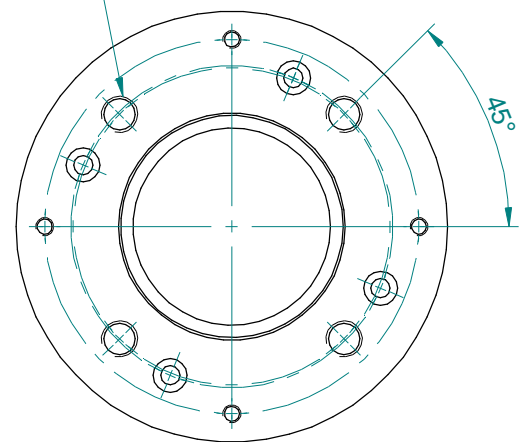
TYPE 'B3/B4'  
COUPLING DETAILS

4 HOLES M16\*2p  
EQUI-SPACED  
ON A 140 PCD  
(ISO 5210 F14)



F14 BASE DETAILS  
FOR 'B1' & 'B3/B4' COUPLINGS

4 HOLES 5/8-11UNC  
EQUI-SPACED  
ON A 5.5" PCD  
(MSS SP-102 FA14)



FA14 BASE DETAILS  
FOR 'B1' & 'B3/B4' COUPLINGS